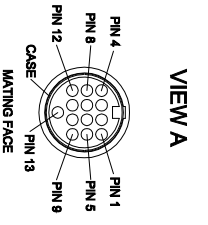
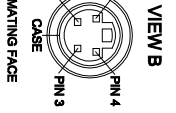


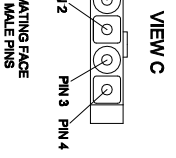
Revision Notes:			
1. CHANGED CAMERA CABLE DIMENSION FROM 175 ± 30 TO 190 ± 30. UPDATED FRAME.			
Drawn: R.B	Checked: M.B	Approved: S.M	Date: 31/01/13



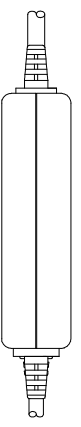
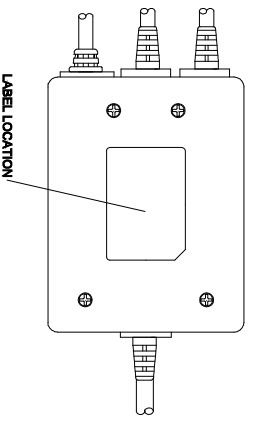
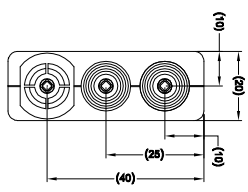
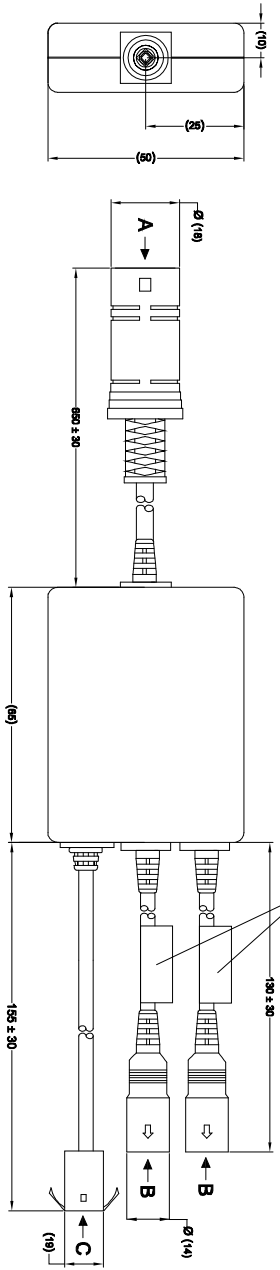
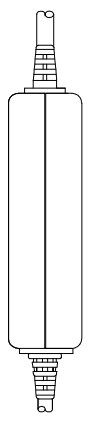
PIN #	WIRE COLOUR	DESCRIPTION
1	THIN BLACK	CMV 2 VIDEO
2	THICK WHITE	CMV 2 B+
3	THIN GREEN	CMV 1 TRIGGER
4	ORANGE	CMV 2 AUDIO
5	THIN WHITE	CMV 1 VIDEO
6	THICK BLACK	CMV 1 B+
7	YELLOW	CMV 2 TRIGGER
8	THIN RED	CMV 1 AUDIO
9	NO CONNECTION	N/C
10	THICK GREEN	N/C
11	SHIELD	SHD (SHIELD)
12	SHIELD	SHD (SHIELD)
13	THICK RED	SHD (SHIELD)
14	THICK RED	SHD (SHIELD)
CASE	SHIELD	SHD (SHIELD)



PIN #	WIRE COLOUR	DESCRIPTION
1	WHITE	VIDEO
2	BLUE	ADDITIONAL PULSE
3	RED	AUDIO
4	YELLOW	TRIGGER
CASE	SHIELD	SHD (SHIELD)



PIN #	WIRE COLOUR	DESCRIPTION
1	BLACK	SHD (SHIELD)
2	WHITE	TRIGGER CMV 1
3	GREEN	TRIGGER CMV 2
4	RED	VIDEO



- SPECIFICATIONS**
- 1) ALL LABELS SHOULD BE SILVER.
  - 2) ALL INK SHOULD BE PERMANENT BLACK.
  - 3) FONT USED ON LABELS SHOULD BE ARIAL BLACK.
  - 4) ALL EXTENSIONS SHOULD BE 1MM WITH AN ARROW.
  - 5) CONNECTOR GUIDES MUST LINE UP WITH AN ARROW.

**PROPRIETARY NOTICE**  
 THIS DESIGN AND TECHNICAL INFORMATION APPEARING ON THIS DRAWING IS THE PROPERTY OF BRIGADE ELECTRONICS, AND IS DISCLOSED IN CONFIDENCE. IT IS NOT TO BE COPIED, REPRODUCED, REVISED TO OR EXPROPRIATED BY OTHERS, EITHER IN WHOLE OR IN PART WITHOUT THE EXPRESS WRITTEN CONSENT OF BRIGADE ELECTRONICS.

**BRIGADE**  
 www.brigade-electronics.com

Assembly: PI Approval TROY CHOI 17/01/13		Approved by DKERAI		Checked by JNEWMAN		Drawn by B.CHILDS	
Angle of Projection 		Units mm	Scale N/A	Released 16/12/2009	Assembly Ref -		
Status RELEASED		Part No 3174		BE-8XXEM-CA			
				BE-000918-01-09			